



## SPECIAL EVENTS

## CONTACT

TEL 678 / 705 1235  
eventssprbuck@fordfry.com

---

### SEMI PRIVATE EVENTS

SUPERICA WILL BE OPEN TO THE PUBLIC

#### Superica Buckhead Stage

*25 guests for a seated event*

Our Semi-Private Stage is available for seated parties up to 25 guests. Located on the raised stage overlooking the main dining room, this seating area is open to the restaurant, allowing for separation while being a part of Superica's energetic ambiance. We consider this space semi private as other restaurant guests may be seated at any open tables around the stage area. A food and beverage minimum does apply

We apologize for any inconvenience, but speakers, live music and presentations are not allowed during restaurant hours.

### PRIVATE EVENT

EVENT AREA WILL BE CLOSED TO THE PUBLIC

#### Superica Buckhead Buyout

*150 guests for a private, seated event*

If you wish to host a private event, Superica can be closed to the public. A buyout of the restaurants will include: entire dining room, bar, and patio area.

We can offer a seated lunch or dinner event for up to 150 guests. We offer passed or stationed hors d'oeuvres selections, for a cocktail style event for 200 guests.

For buy-out events, a food and beverage minimum does apply and is based upon the day and time of the week.

If there are any dietary restrictions among the group, please be sure to make the Event Manager aware.

---

# *Superica*

SPECIAL  
EVENTS

CONTACT

TEL 678 / 705 1235  
[eventssprbuck@fordfry.com](mailto:eventssprbuck@fordfry.com)

---

## EVENT SPACE





---

# *Superica*

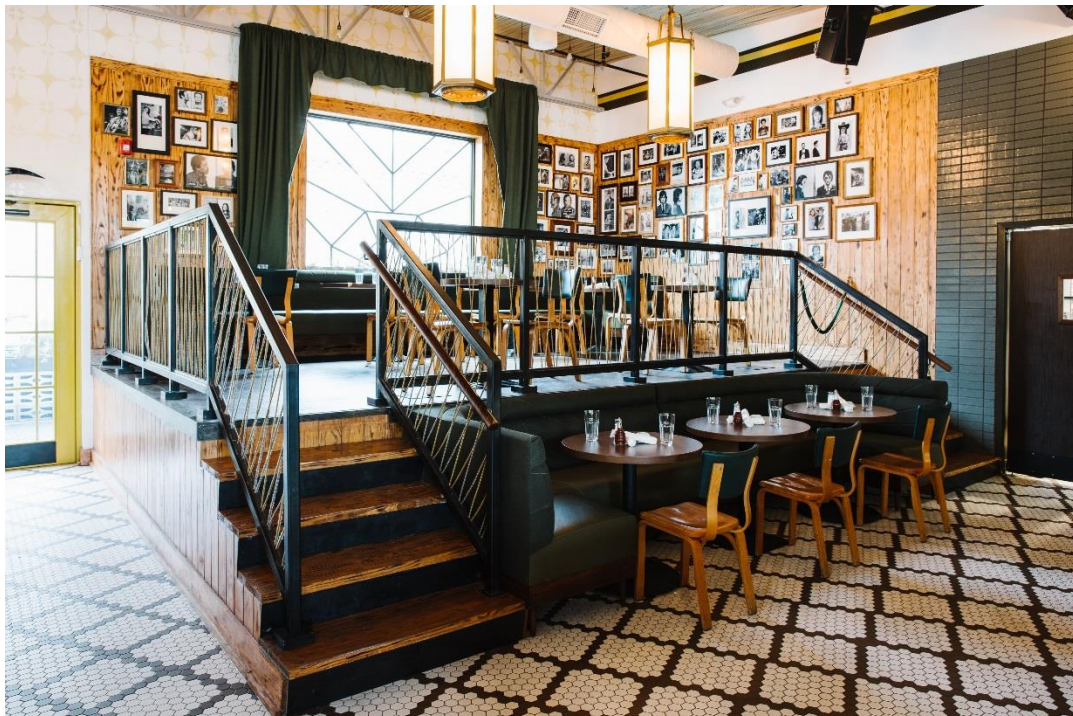
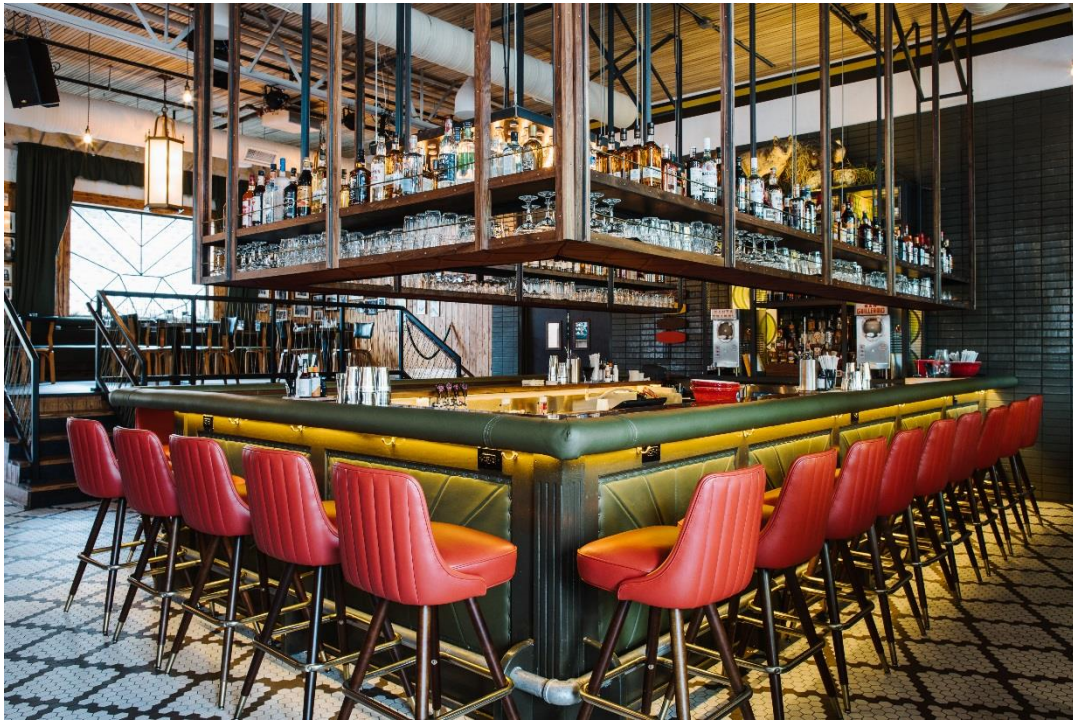
SPECIAL  
EVENTS

CONTACT

TEL 678 / 705 1235  
[eventssprbuck@fordfry.com](mailto:eventssprbuck@fordfry.com)

---

## EVENT SPACE



### FLOOR PLAN

